

Order Code	Description
<input checked="" type="checkbox"/> FT1	PosiTector Standard with 6000 FT Probe
<input type="checkbox"/> FT3	PosiTector Advanced with 6000 FT Probe

PosiTector® 6000 Coating Thickness Gage	Compare PosiTector Gage Bodies	
	Standard	Advanced
Features		
Fast Mode — 90+ readings per minute for quick inspection	•	•
3 Scan Modes — Increase measurement speed to 180+ readings per minute		•
HiLo alarm — Audibly and visibly alerts when measurements exceed your specified limits	•	•
Statistics Mode — Instantly calculate average, standard deviation, min/max thickness and number of readings while measuring	•	•
Two year warranty on body AND probe	•	•
Reading Storage Capacity	250 per probe	100,000 in up to 1,000 batches
Onscreen Batch Annotation — Add notes, change batch names and more with built-in QWERTY keyboard		•
SSPC-PA2 feature determines if film thickness over a large area conforms to user-specified min/max levels		•
PSPC 90/10 feature determines if a coating system complies with an IMO performance standard for protective coatings		•
Multiple stored calibration adjustments for measuring on a variety of substrate conditions		•
Connection Options		
Sealed USB port for fast, simple connection to a PC and to supply continuous power. USB cable included.	•	•
Bluetooth 4.0 technology for data transfer to a mobile device running the PosiTector App or optional portable printer. BLE API available for integration into third-party software.		•
WiFi technology wirelessly synchronizes with PosiSoft.net and downloads software updates		•

Removeable Integral Probe High Range	Probe Model FT	
<p>21mm / 0.8" Side View</p>	Range:	0 - 250 mils 0 - 6 mm 0 - 6000 µm
	*Accuracy:	$\pm (0.5 \text{ mils} + 1\%) \text{ } 0 - 100 \text{ mils}$ $\pm (0.5 \text{ mil} + 3\%) > 100 \text{ mils}$ $\pm (0.01 \text{ mm} + 1\%) \text{ } 0 - 2.5 \text{ mm}$ $\pm (0.01 \text{ mm} + 3\%) > 2.5 \text{ mm}$
*Accuracies are stated as a fixed value plus a percentage of the gage's actual reading.		

FT probe for measuring thick protective coatings on steel substrates. Ideal for thick epoxy, rubber, intumescent fireproofing and more.



PosiTector 6000 FT1

All Gages Feature...

Simple

- **NEW** Faster measurement speed — 60+ readings per minute
- Ready to measure — no adjustment required for most applications
- Enhanced one-handed menu navigation
- Flashing display — ideal in a noisy environment
- RESET feature instantly restores factory settings

Accurate

- Certificate of Calibration showing traceability to NIST or PTB included (Long Form)
- Built-in temperature compensation ensures measurement accuracy
- Hi-RES mode increases displayed resolution for use on applications that require greater precision
- Conforms to national and international standards including ISO and ASTM

Versatile

- Multiple Calibration adjustment options including 1 point, 2 point, known thickness, average zero
- Selectable display languages
- High contrast LCD with backlit display
- Flip display enables right-side-up viewing
- Extended cables available (up to 75 m/250 ft) for underwater or remote measuring
- Uses alkaline or rechargeable batteries (built-in charger)

Order Code	Description
<input checked="" type="checkbox"/> FT1	PosiTector Standard with 6000 FT Probe
<input type="checkbox"/> FT3	PosiTector Advanced with 6000 FT Probe

Durable

- Solvent, acid, oil, water and dust resistant — weatherproof
- Wear-resistant probe tip
- Shock-absorbing, protective rubber holster with belt clip
- Two year warranty on gage body AND probe

Powerful

- Statistics mode continually displays/updates average, standard deviation, min/max thickness and number of readings while measuring
- Screen Capture — Save screen images for record keeping and review
- HiLo alarm audibly and visibly alerts when measurements exceed user-specified limits
- **NEW** Enhanced FAST mode — 90+ readings per minute for quick inspection
- Sealed USB port for fast, simple connection to a PC and to supply continuous power. USB cable included.
- Software updates via web keep your gage current
- Every stored measurement is date and time stamped
- Software Solutions for viewing, analyzing & reporting data. See page 3 for a complete overview of these options.



Comes complete with PosiTector gage body, FT probe, precision plastic shim(s), protective rubber holster with belt clip, wrist strap, 3 AAA alkaline batteries, instructions, protective lens shield, convenient carrying case, Long Form Certificate of Calibration traceable to NIST or PTB, USB cable, PosiSoft Software, two (2) year warranty.

SIZE: 137 x 61 x 28 mm (5.4" x 2.4" x 1.1")

BODY WEIGHT: 140 g (4.9 oz.) without batteries

CONFORMS TO: ISO 2178/2360/2808, ISO 19840, ASTM B244/B499/D1186/D1400/D7091/E376/G12, BS3900-C5, SSPC-PA2 and others

PosiSoft® Suite of Software

Four FREE and unique ways to view and report your PosiTector and PosiTest data

PosiSoft Desktop — PC/Mac

Powerful desktop software for downloading, viewing, printing and archiving measurement data. No internet connection required.

- Import readings directly from the gage via USB or from legacy PosiSoft desktop versions
- Synchronize measurement data including readings, notes and pictures to and from PosiSoft.net
- Import/Export Templates and Jobs to share with other users
- Import PDF forms and overlay **Custom Fields** for automatic population of inspection and measurement data
- Report preview automatically refreshes as changes are made



Prompted Batch Mode

Create pre-defined batches with onscreen text and image prompts for each reading and upload to PosiTector 6000 gages (*Advanced models only*).

- Ideal for ensuring a consistent measurement pattern for repetitive jobs or when specific measurement locations are required
- Create and store multiple templates for different jobs



PosiTector App — Mobile

Mobile app connects PosiTector Advanced instruments, the PosiTector SmartLink and the PosiTest AT-A to your *iOS* or *Android* smart device.

- Auto pairing Bluetooth BLE connection
- Automatically generate user-formatted reports and share via email, text, cloud storage services like Dropbox, and more
- Export readings to PosiSoft Desktop or synchronize readings to and from PosiSoft.net for further reporting and archival options

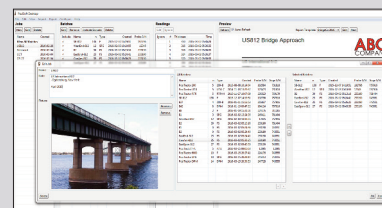
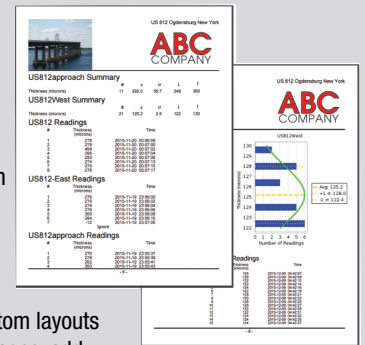


PosiSoft Custom PDF Report Generator

Easily create reports from your measurement data in seconds.

featured on
PosiSoft Desktop
PosiSoft.net
PosiTector App

- Include inspection information such as on-site pictures, screen captures, notes and more to communicate important details
- Create and save multiple custom layouts as templates – insert cover pages, add logos/images, and select font and point size
- Select the information to include for each product type – charts, histograms, readings, time stamps and more
- Compile multi-batch reports from one or more probes and instrument types
- Export readings as comma separated value (.CSV) files which can easily be imported into Excel and other supporting applications

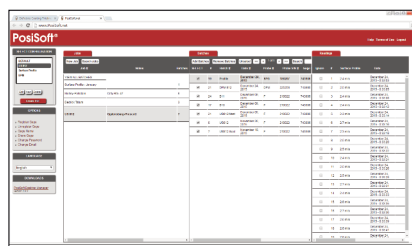


Jobs feature consolidates batches into groups to keep measurement data organized and to quickly create multi-batch reports (not available on PosiTector App)

PosiSoft.net — Web-based

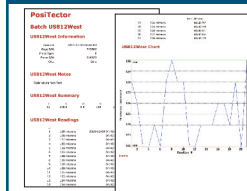
A web-based application offering secure centralized management of readings. Access your data from any web-connected device.

- Synchronize data when connected via USB or WiFi
- Synchronize measurement data including readings, notes and pictures with PosiSoft Desktop and PosiTector App
- Securely store measurement data in the cloud and share with authorized users via a secure login



Jobs Batches Readings

PosiSoft USB Drive — Gage Based



A simple gage interface to retrieve data in a manner similar to USB flash drives, cameras, or digital audio players. No software to install or internet connection required.

- View and print readings and graphs using universal PC/Mac web browsers and file explorers
- Measurement data can be printed quickly from a formatted HTML report or exported in .CSV format for further analysis in spreadsheets
- Simple file management - Copy and paste measurement data from the PosiTector to a local folder on your computer, network folder or cloud drive
- Access stored screen captures (snapshots) of the PosiTector display



PosiTector and PosiTest AT-A instruments can integrate with third-party software, drones, ROVs, PLCs, and robotic devices using several industry-standard communication protocols.

PosiTector Developer Resources

including Bluetooth 4.0, WiFi, USB Keyboard, and USB Serial

DeFelsko®
The Measure of Quality

DeFelsko Corporation • 800 Proctor Ave. • Ogdensburg, New York 13669-2205 USA
Toll Free 1-800-448-3835 • Tel: +1-315-393-4450 • Fax: +1-315-393-8471
techsale@defelsko.com • www.defelsko.com

