

Order Code	Description
<input checked="" type="checkbox"/> F45S1	PosiTector Standard with 6000 F45S Probe
<input type="checkbox"/> F45S3	PosiTector Advanced with 6000 F45S Probe

PosiTector® 6000 Coating Thickness Gage	Compare PosiTector Gage Bodies	
Features	Standard	Advanced
Fast Mode — 90+ readings per minute for quick inspection	●	●
3 Scan Modes — Increase measurement speed to 180+ readings per minute		●
HiLo alarm — Audibly and visibly alerts when measurements exceed your specified limits	●	●
Statistics Mode — Instantly calculate average, standard deviation, min/max thickness and number of readings while measuring	●	●
Two year warranty on body AND probe	●	●
Reading Storage Capacity	250 per probe	100,000 in up to 1,000 batches
Onscreen Batch Annotation — Add notes, change batch names and more with built-in QWERTY keyboard		●
SSPC-PA2 feature determines if film thickness over a large area conforms to user-specified min/max levels		●
PSPC 90/10 feature determines if a coating system complies with an IMO performance standard for protective coatings		●
Multiple stored calibration adjustments for measuring on a variety of substrate conditions		●
Connection Options		
Sealed USB port for fast, simple connection to a PC and to supply continuous power. USB cable included.	●	●
<b>Bluetooth 4.0 technology</b> for data transfer to a mobile device running the PosiTector App or optional portable printer. <b>BLE API</b> available for integration into third-party software.		●
WiFi technology wirelessly synchronizes with PosiSoft.net and downloads software updates		●



PosiTector 6000 F45S1



Removeable Cabled Probe	Probe Model F45S	
	<b>Range:</b>	0 - 45 mils 0 - 1150 μm
	<b>*Accuracy:</b>	± (0.02 mils + 1%) 0 - 4 mils ± (0.1 mils + 3%) > 4 mils ± (0.5 μm + 1%) 0 - 100 mm ± (2 μm + 3%) > 100 mm
*Accuracies are stated as a fixed value plus a percentage of the gage's actual reading.		

**F45S** - 45 degree microprobe for measuring non-magnetic coatings on steel substrates. With our smallest measuring tip and best thin-film accuracy, this instrument is ideal for measuring on small parts, hard-to-reach areas, or close to edges.

Order Code	Description
<input checked="" type="checkbox"/> F45S1	PosiTector Standard with 6000 F45S Probe
<input type="checkbox"/> F45S3	PosiTector Advanced with 6000 F45S Probe

### All Gages Feature...

#### Simple

- **NEW** Faster measurement speed — 60+ readings per minute
- Ready to measure — no adjustment required for most applications
- Enhanced one-handed menu navigation
- Flashing display — ideal in a noisy environment
- RESET feature instantly restores factory settings

#### Accurate

- Certificate of Calibration showing traceability to NIST or PTB included (Long Form)
- Built-in temperature compensation ensures measurement accuracy
- Hi-RES mode increases displayed resolution for use on applications that require greater precision
- Conforms to national and international standards including ISO and ASTM

#### Versatile

- Multiple Calibration adjustment options including 1 point, 2 point, known thickness, average zero
- Selectable display languages
- High contrast LCD with backlit display
- Flip display enables right-side-up viewing
- Extended cables available (up to 75 m/250 ft) for underwater or remote measuring
- Uses alkaline or rechargeable batteries (built-in charger)

#### Durable

- Solvent, acid, oil, water and dust resistant — weatherproof
- Wear-resistant probe tip
- Shock-absorbing, protective rubber holster with belt clip
- Two year warranty on gage body AND probe

#### Powerful

- Statistics mode continually displays/updates average, standard deviation, min/max thickness and number of readings while measuring
- Screen Capture — Save screen images for record keeping and review
- HiLo alarm audibly and visibly alerts when measurements exceed user-specified limits
- **NEW** Enhanced FAST mode — 90+ readings per minute for quick inspection
- Sealed USB port for fast, simple connection to a PC and to supply continuous power. USB cable included.
- Software updates via web keep your gage current
- Every stored measurement is date and time stamped
- Software Solutions for viewing, analyzing & reporting data. See page 3 for a complete overview of these options.



**Comes complete** with PosiTector gage body, F45S probe, precision plastic shim(s), protective rubber holster with belt clip, wrist strap, 3 AAA alkaline batteries, instructions, protective lens shield, convenient carrying case, Long Form Certificate of Calibration traceable to NIST or PTB, USB cable, PosiSoft Software, two (2) year warranty.

**SIZE:** 137 x 61 x 28 mm (5.4" x 2.4" x 1.1")

**BODY WEIGHT:** 140 g (4.9 oz.) without batteries

**CONFORMS TO:** ISO 2178/2360/2808, ISO 19840, ASTM B244/B499/D1186/D1400/D7091/E376/G12, BS3900-C5, SSPC-PA2 and others

# PosiSoft® Suite of Software

Four FREE and unique ways to view and report your PosiTector and PosiTest data

## PosiSoft Desktop — PC/Mac

Powerful desktop software for downloading, viewing, printing and archiving measurement data. No internet connection required.

- Import readings directly from the gage via USB or from legacy PosiSoft desktop versions
- Synchronize measurement data including readings, notes and pictures to and from PosiSoft.net
- Import/Export Templates and Jobs to share with other users
- Import PDF forms and overlay **Custom Fields** for automatic population of inspection and measurement data
- Report preview automatically refreshes as changes are made



### Prompted Batch Mode

Create pre-defined batches with onscreen text and image prompts for each reading and upload to PosiTector 6000 gages (Advanced models only).

- Ideal for ensuring a consistent measurement pattern for repetitive jobs or when specific measurement locations are required
- Create and store multiple templates for different jobs



## PosiTector App — Mobile

Mobile app connects PosiTector Advanced instruments, the PosiTector SmartLink and the PosiTest AT-A to your iOS or Android smart device.

- Auto pairing Bluetooth BLE connection
- Automatically generate user-formatted reports and share via email, text, cloud storage services like Dropbox, and more
- Export readings to PosiSoft Desktop or synchronize readings to and from PosiSoft.net for further reporting and archival options

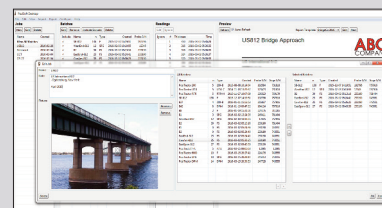
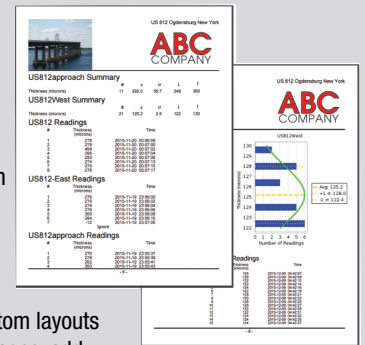


## PosiSoft Custom PDF Report Generator

Easily create reports from your measurement data in seconds.

featured on  
PosiSoft Desktop  
PosiSoft.net  
PosiTector App

- Include inspection information such as on-site pictures, screen captures, notes and more to communicate important details
- Create and save multiple custom layouts as templates – insert cover pages, add logos/images, and select font and point size
- Select the information to include for each product type – charts, histograms, readings, time stamps and more
- Compile multi-batch reports from one or more probes and instrument types
- Export readings as comma separated value (.CSV) files which can easily be imported into Excel and other supporting applications

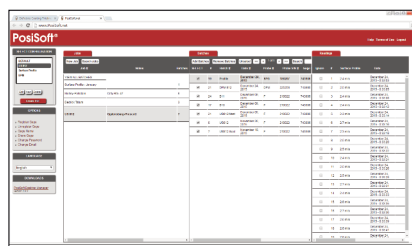


**Jobs** feature consolidates batches into groups to keep measurement data organized and to quickly create multi-batch reports (not available on PosiTector App)

## PosiSoft.net — Web-based

A web-based application offering secure centralized management of readings. Access your data from any web-connected device.

- Synchronize data when connected via USB or WiFi
- Synchronize measurement data including readings, notes and pictures with PosiSoft Desktop and PosiTector App
- Securely store measurement data in the cloud and share with authorized users via a secure login



Jobs Batches Readings

## PosiSoft USB Drive — Gage Based



A simple gage interface to retrieve data in a manner similar to USB flash drives, cameras, or digital audio players. No software to install or internet connection required.

- View and print readings and graphs using universal PC/Mac web browsers and file explorers
- Measurement data can be printed quickly from a formatted HTML report or exported in .CSV format for further analysis in spreadsheets
- Simple file management - Copy and paste measurement data from the PosiTector to a local folder on your computer, network folder or cloud drive
- Access stored screen captures (snapshots) of the PosiTector display



PosiTector and PosiTest AT-A instruments can integrate with third-party software, drones, ROVs, PLCs, and robotic devices using several industry-standard communication protocols.

## PosiTector Developer Resources

including Bluetooth 4.0, WiFi, USB Keyboard, and USB Serial

**DeFelsko®**  
The Measure of Quality

DeFelsko Corporation • 800 Proctor Ave. • Ogdensburg, New York 13669-2205 USA  
Toll Free 1-800-448-3835 • Tel: +1-315-393-4450 • Fax: +1-315-393-8471  
techsale@defelsko.com • www.defelsko.com

