

Order Code	Description
<input checked="" type="checkbox"/> SPG1	PosiTector Standard with SPG Probe
<input type="checkbox"/> SPG3	PosiTector Advanced with SPG Probe

PosiTector [®] <i>SPG</i> Surface Profile Gage		Compare PosiTector Gage Bodies	
Features	Standard	Advanced	
High contrast, reversible color LCD with backlit display	•	•	
HiLo alarm — Audibly and visibly alerts when measurements exceed your specified limits	•	•	
Statistics Mode — Instantly calculate average, standard deviation, min/max thickness and number of readings while measuring	•	•	
Two year warranty on body AND probe	•	•	
Reading Storage Capacity	250 per probe	100,000 in up to 1,000 batches	
Onscreen Batch Annotation — Add notes, change batch names and more with built-in QWERTY keyboard		•	
SmartBatch™ allows entry of user-defined paramters and criteria to comply with various standards and test methods		•	
Real time graphing, picture prompting and batch notes		•	
Connection Options			
Sealed USB port for fast, simple connection to a PC and to supply continuous power. USB cable included.	•	•	
Bluetooth 4.0 technology for data transfer to a mobile device running the PosiTector App or optional portable printer. BLE API available for integration into third-party software.		•	
WiFi technology wirelessly synchronizes with PosiSoft.net and downloads software updates		•	



PosiTector SPG1



Removeable Integral Probe	Probe Model SPG				
	Application:	Blasted Steel			
	Measuring Range:	0 - 500 μ m 0 - 20 mils			
	Accuracy:	\pm (5 μ m + 5%) \pm (0.02 mils + 5%)			
	Tip:	<table border="1"> <tr> <td>Angle</td> <td>60 degree*</td> </tr> <tr> <td>Radius</td> <td>50 μm (2 mils)</td> </tr> </table>	Angle	60 degree*	Radius
Angle	60 degree*				
Radius	50 μ m (2 mils)				
*30 degree tips available for conformance to Australian standard AS 3994.5-C					

The PosiTector *SPG* is a surface profile gage that measures and record peak to valley surface profile heights on blasted steel.

Order Code	Description
<input checked="" type="checkbox"/> SPG1	PosiTector Standard with SPG Probe
<input type="checkbox"/> SPG3	PosiTector Advanced with SPG Probe

All Gages Feature...

Simple

- Fast measurement rate of over 50 readings per minute — ideal for quickly and accurately measuring larger surface areas
- Enhanced one-handed menu navigation
- RESET feature instantly restores factory settings

Accurate

- Certificate of Calibration showing traceability to PTB included (Long Form)
- Built-in temperature compensation ensures measurement accuracy
- Glass zero plate and metal shim included
- Conforms to national and international standards including ASTM DD4417 Method B and SSPC-PA17

Versatile

- 30° angle interchangeable probe tip available for special surface profile applications
- Cabled probes available for blasted steel, textured coatings and concrete profile
- Selectable display languages
- High contrast LCD with backlit display
- Flip display enables right-side-up viewing
- Uses alkaline or rechargeable batteries (built-in charger)
- Mils/Microns switchable

Durable

- Alumina wear face and tungsten carbide tip for long life and continuous accuracy — field replaceable tips
- Solvent, acid, oil, water and dust resistant — weatherproof
- Rugged, indoor/outdoor instrument — ideal for field or shop use
- Shock-absorbing, protective rubber holster with belt clip
- Two year warranty on gage body AND probe

Powerful

- Continually displays/updates average, standard deviation, min/max depth and number of readings while measuring
- Screen Capture — Save screen images for record keeping and review
- HiLo alarm audibly and visibly alerts when measurements exceed user-specified limits
- Sealed USB port for fast, simple connection to a PC and to supply continuous power. USB cable included.
- Software updates via web keep your gage current
- Every stored measurement is date and time stamped
- Software Solutions for viewing, analyzing & reporting data. See page 3 for a complete overview of these options.



Comes complete with PosiTector gage body, SPG probe, glass zero plate, metal check shim, protective rubber holster with belt clip, wrist strap, 3 AAA alkaline batteries, instructions, nylon carrying case with shoulder strap, protective lens shield, Long Form Certificate of Calibration traceable to PTB, USB cable, PosiSoft Software, two (2) year warranty on body and probe.

SIZE: 137 x 61 x 28 mm (5.4" x 2.4" x 1.1")

BODY WEIGHT: 140 g (4.9 oz.) without batteries

CONFORMS TO: ASTM D4417-B, AS 3894.5-C (with optional 30° tip), U.S. Navy NSI 009-32, SANS 5772 and others

PosiSoft® Suite of Software

Four FREE and unique ways to view and report your PosiTector and PosiTest data

PosiSoft Desktop — PC/Mac

Powerful desktop software for downloading, viewing, printing and archiving measurement data. No internet connection required.

- Import readings directly from the gage via USB or from legacy PosiSoft desktop versions
- Synchronize measurement data including readings, notes and pictures to and from PosiSoft.net
- Import/Export Templates and Jobs to share with other users
- Import PDF forms and overlay **Custom Fields** for automatic population of inspection and measurement data
- Report preview automatically refreshes as changes are made



Prompted Batch Mode

Create pre-defined batches with onscreen text and image prompts for each reading and upload to PosiTector 6000 gages (*Advanced models only*).

- Ideal for ensuring a consistent measurement pattern for repetitive jobs or when specific measurement locations are required
- Create and store multiple templates for different jobs



PosiTector App — Mobile

Mobile app connects PosiTector Advanced instruments, the PosiTector SmartLink and the PosiTest AT-A to your *iOS* or *Android* smart device.

- Auto pairing Bluetooth BLE connection
- Automatically generate user-formatted reports and share via email, text, cloud storage services like Dropbox, and more
- Export readings to PosiSoft Desktop or synchronize readings to and from PosiSoft.net for further reporting and archival options

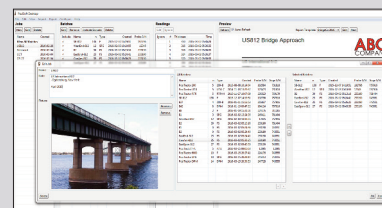
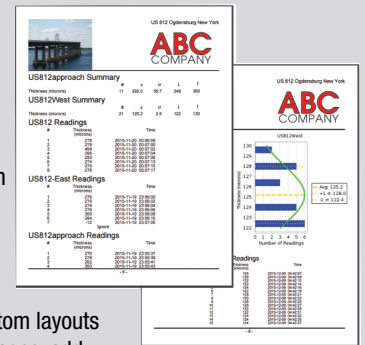


PosiSoft Custom PDF Report Generator

Easily create reports from your measurement data in seconds.

featured on
PosiSoft Desktop
PosiSoft.net
PosiTector App

- Include inspection information such as on-site pictures, screen captures, notes and more to communicate important details
- Create and save multiple custom layouts as templates – insert cover pages, add logos/images, and select font and point size
- Select the information to include for each product type – charts, histograms, readings, time stamps and more
- Compile multi-batch reports from one or more probes and instrument types
- Export readings as comma separated value (.CSV) files which can easily be imported into Excel and other supporting applications

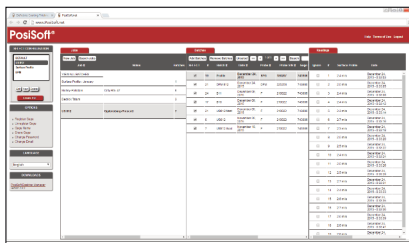


Jobs feature consolidates batches into groups to keep measurement data organized and to quickly create multi-batch reports (not available on PosiTector App)

PosiSoft.net — Web-based

A web-based application offering secure centralized management of readings. Access your data from any web-connected device.

- Synchronize data when connected via USB or WiFi
- Synchronize measurement data including readings, notes and pictures with PosiSoft Desktop and PosiTector App
- Securely store measurement data in the cloud and share with authorized users via a secure login



Jobs Batches Readings

PosiSoft USB Drive — Gage Based



A simple gage interface to retrieve data in a manner similar to USB flash drives, cameras, or digital audio players. No software to install or internet connection required.

- View and print readings and graphs using universal PC/Mac web browsers and file explorers
- Measurement data can be printed quickly from a formatted HTML report or exported in .CSV format for further analysis in spreadsheets
- Simple file management - Copy and paste measurement data from the PosiTector to a local folder on your computer, network folder or cloud drive
- Access stored screen captures (snapshots) of the PosiTector display



PosiTector and PosiTest AT-A instruments can integrate with third-party software, drones, ROVs, PLCs, and robotic devices using several industry-standard communication protocols.

PosiTector Developer Resources

including Bluetooth 4.0, WiFi, USB Keyboard, and USB Serial

DeFelsko®
The Measure of Quality

DeFelsko Corporation • 800 Proctor Ave. • Ogdensburg, New York 13669-2205 USA
Toll Free 1-800-448-3835 • Tel: +1-315-393-4450 • Fax: +1-315-393-8471
techsale@defelsko.com • www.defelsko.com

